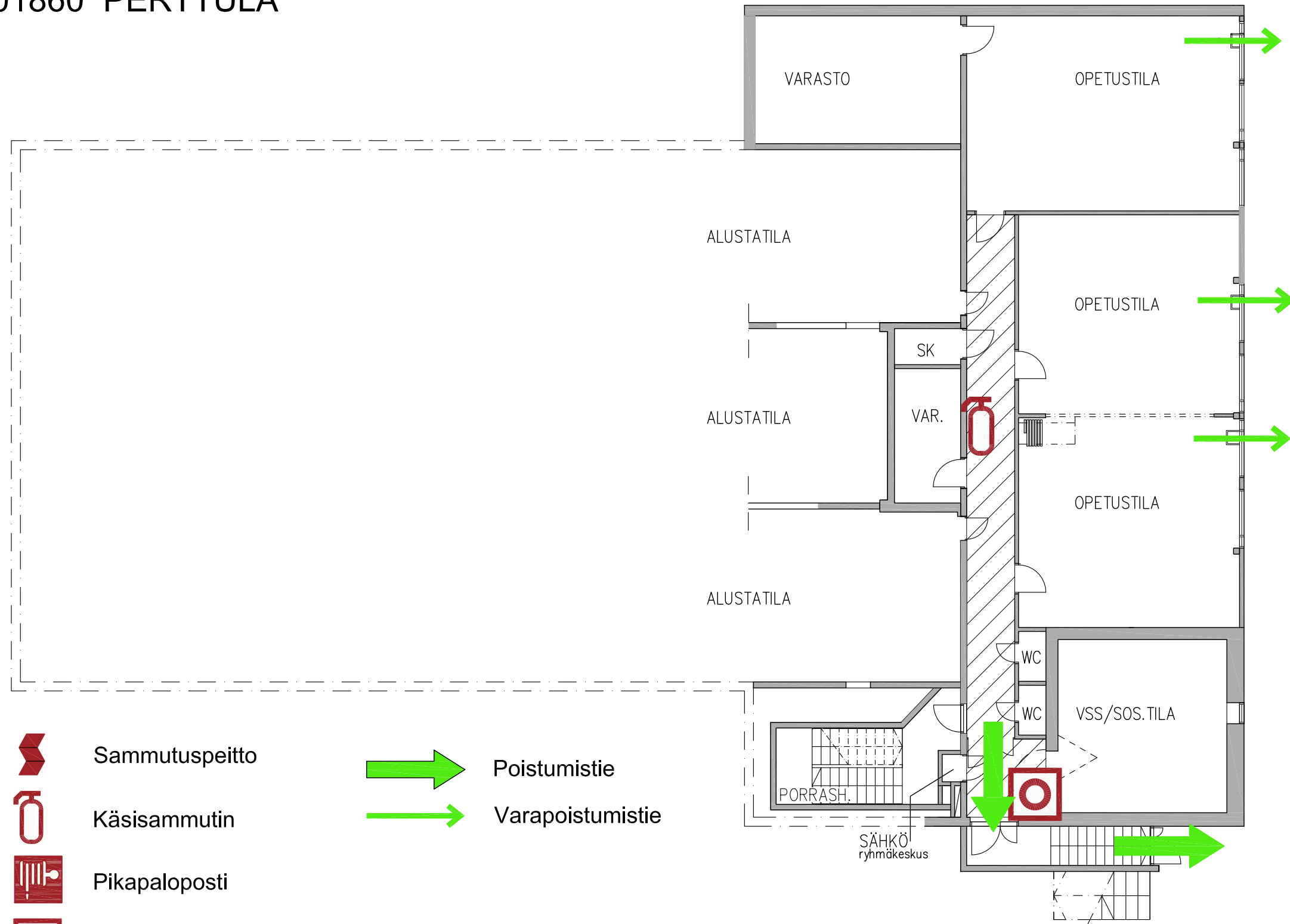






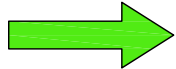



Keuda
NURMIJÄRVEN AMMATTIOPISTO
Lopentie 20
01860 PERTTULA

POISTUMISTIET B-C rakennus kellari



-  Sammutuspeitto
 -  Käsiammutin
 -  Pikapaloposti
 -  Paloilmoituspainike
 -  Ensiapukaappi
 -  Defibrillaattori (sydäniskuri) 1kpl sijaitsee A-rakennuksen 1.kerroksen tilassa: A1045 Käytävä
-  Poistumistie
-  Varapoistumistie

HÄTÄNUMERO ☎ 112

Ambulanssi
Poliisi
Palokunta